



TEACH ENGLISH IN SOUTH KOREA



AWARD-WINNING
24/7 SUPPORT



GUARANTEED
JOB PLACEMENTS



92% RATING
142+ REVIEWS



CULTURAL
ORIENTATIONS



2200+ TEACHERS
PLACED WORLDWIDE



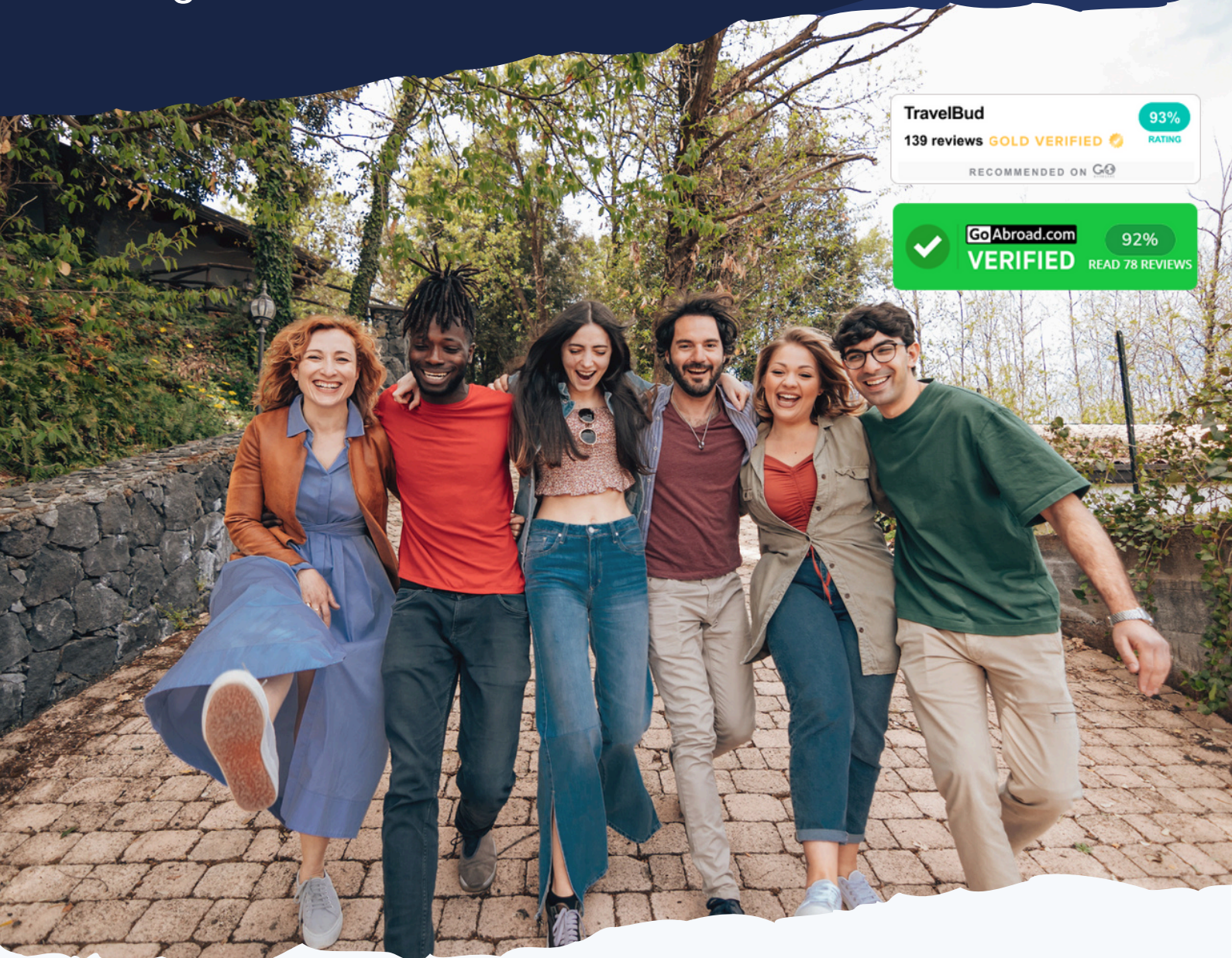
ACCREDITED TEFL
CERTIFICATION

EARNED TRUST, AWARD-WINNING SUPPORT

Your Teach Abroad Journey
Begins Here!

TravelBud 93% RATING
139 reviews **GOLD VERIFIED**
RECOMMENDED ON 

 **GoAbroad.com** 92% VERIFIED
READ 78 REVIEWS



WHAT OUR TEACHERS ARE SAYING

Join thousands of TravelBud alumni fulfilling their dream of teaching English Abroad



I felt a lot more safe and secure using this program

TravelBud were always there to answer my questions and listen to me when I had any concerns. The staff workers are so kind and they told me the truth of what I would face, both pretty and ugly truth. I felt a lot more safe and secure using this program.



Tiana

United States, Apr 14, 2023



Recommended for anyone thinking of teaching English abroad for their first time

Moving to a different country can be difficult but TravelBud helped me find a very comfortable job and put me in contact with all the right people so when I arrived my transition was smooth and enjoyable!



Emma

United States, Dec 7, 2022



Very Dependable

I had no success with other agencies but TravelBud came through and found placement in South Korea. Their service has has been spectacular, they saw that I wanted to explore a different culture than my own and helped me throughout. They are very dependable!

[Click here to read more teacher reviews →](#)



Ade

United States, Sep 21, 2022

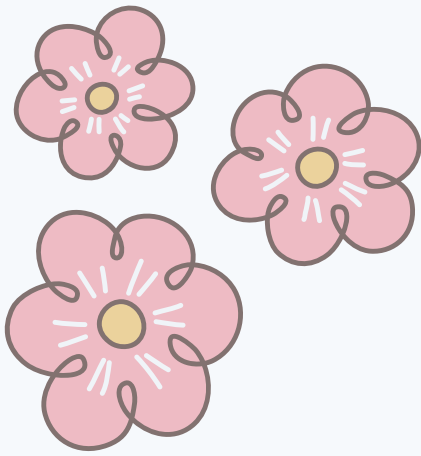
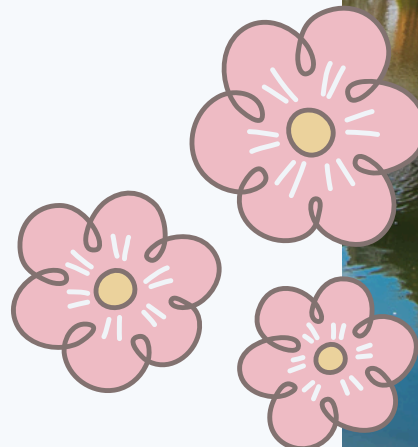


TABLE OF CONTENTS

- > Program Overview
- > About South Korea
- > Guaranteed Job Placement
- > Lifetime Placement Guarantee
- > Program Options
- > Cultural Preparation
- > TEFL/TESOL Accreditation
- > Accommodation
- > Teaching Placements
- > Intake Dates
- > Budgets
- > Fees
- > About Us





PROGRAM OVERVIEW

Guaranteed Job Placement with **Peace of Mind** Pre-Departure and 24/7 In-country Support

We outline the entire process you'll follow to realize the dream of teaching in South Korea, from all **pre-departure support**, to **guaranteeing you a job** in one of our trusted and vetted schools and **supporting you** during your entire experience.

Our knowledgeable, experienced and passionate enrolment and support teams **guide and support you every step of the way** both before you leave your home country and once you arrive in South Korea.



SALARY & BENEFITS

Earn **\$1600 – \$1900 USD*** (2,1 – 2,5 million Won) per month. Free furnished housing, airfare reimbursement, paid holidays, 13th paycheck and health insurance coverage. *Dependent on exchange rate.



PLACEMENTS

Placements are in private language centers (“Hagwons”) teaching kindergarten, primary (elementary and middle) and high school students.



CONTRACT LENGTH

Placements are for 1 year and can be renewed if you'd like to stay and continue to teach and travel.



IN-CLASS OR ONLINE ACCREDITATION & PLACEMENT ONLY OPTIONS

Get TEFL/TESOL certified in-class in South Korea or online. If you already have an accredited TEFL/TESOL certification, our Placement Only option is best for you.



ABOUT SOUTH KOREA

HISTORY

Koreans have a unique history spanning thousands of years. Korean pottery dates to 8000 BC, and the Gojoseon kingdom formed in 2333 BC. After WWII, with the end of Japanese occupation of Korea in 1945, the country was divided by a United Nations arrangement, with Soviet military administration taking place in the north and the US military in the south from 1945-1948.

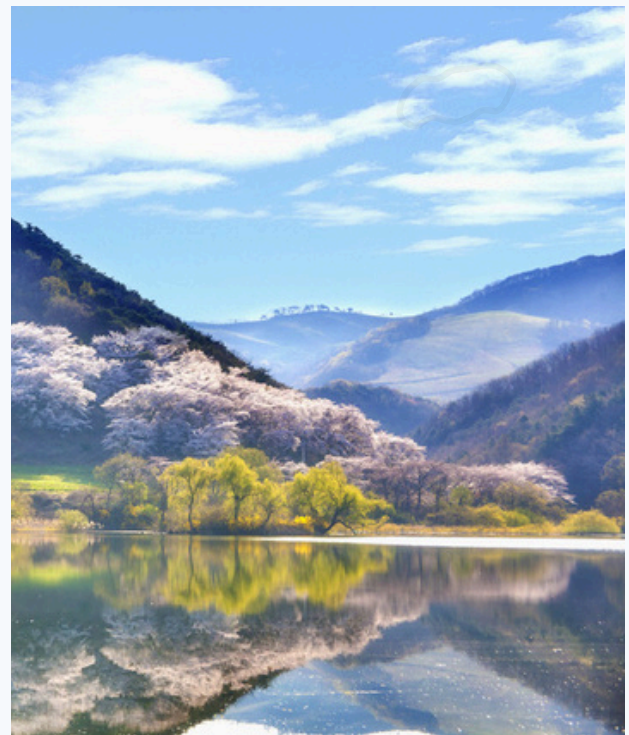
Originally, this division was meant to be a temporary step in re-creating a unified Korea. This US-Soviet joint commission turned out to be less than productive, and the UN General Assembly ordered a general election to be held in Korea. The north completely rejected this idea so the election was only held in the south, and with the first presidency the first Republic of Korea was established in 1948.

Two years later, South Korea declares independence which led an invasion by the north and three years of turmoil that became the Korean War. Following the war, North Korea and South Korea have become two separate political entities.

Since its beginning, South Korea has evolved in terms of economy, education and culture. South Korea has developed into one of the world's wealthiest and most successful nations.

CLIMATE AND GEOGRAPHY

- Summers (June-August) average 22.5°C to 25°C (71°F - 75°F) with high humidity.
- Winters (December-February) range from -5°C to -2.5°C (23°F - 27°F), mostly cold and dry. Spring and autumn, brief yet pleasant, are ideal for visiting.
- Seoul, South Korea's capital, lies on the Han River's northwestern banks, flowing into the Yellow Sea.



CULTURE

South Korea is one of the most cosmopolitan countries in East Asia with a largely contemporary culture, especially in Seoul, since its 20th century urbanization and industrialization.

Where nearby countries, like Japan and China, have maintained the traditional multi-generational household, South Korea has moved increasingly towards the nuclear family model. Like much of the region, Korea has a considerable amount of historic influence from China but in recent years its culture has drawn heavily from the West, particularly the United States.

There is an eminent consumerist culture in urban Korea, with US concepts like window shopping (ai syopping) and complimentary gifts (seobisseu). Pizza, hamburger, chicken, ice cream and coffee chains from the west are very popular in the country.

South Korea is very tech savvy; an estimated 98% of South Koreans own mobile phones and their internet is among the fastest and most accessible in the world. South Korea boasts an impressive entertainment industry as well; Korean films often outperform major Hollywood films in domestic and other Asian markets, and the Korean pop genre of 'KPop' has become a worldwide sensation.



RELIGION

In South Korea, religion is a mix of Buddhism and Christianity. Based on a 2005 census, 29.2% of the population is Christian, with 18.3% Protestant and 10.9% Roman Catholic. Buddhism claims 22.8%. About 46.5% don't follow a formal religion due to shamanic roots and ancestral worship.

While Buddhism historically influenced the nation, it waned after the Neo-Confucianist Joseon era. A 20th-century revival, alongside Christianity's rise, holds less significance today compared to the past.

LANGUAGE

Korean is the national language of both North and South Korea. About 80 million people speak Korean worldwide. The form of Korean spoken around Seoul is considered standard. Major dialects differ in accent and intonation, but all are comprehensible by speakers of the others.

For over a thousand years, Koreans wrote with Chinese characters. The Chinese writing system requires a knowledge of thousands of characters, and for many commoners there was not enough time to learn. The Hangeul system was therefore established in 1446, and is now the official alphabet of Korea.

Though the country faced centuries of widespread illiteracy, today Korea boasts one of the highest literacy rates in the world.





GUARANTEED JOB PLACEMENT

You could spend your own time trying to find your own teaching position.

But this can be **time-consuming**, **confusing** and **stressful** because you'll have to wade through a myriad of **risk factors** and paperwork when evaluating teaching positions.

THESE CAN INCLUDE BUT ARE NOT LIMITED TO:

- ③ Work visas, relevant permits and documentation
 - ③ Teaching philosophy and environment
 - ③ The interview process
 - ③ Teaching materials
 - ③ The credibility of the school
 - ③ School code of conduct
 - ③ Your safety at the school
 - ③ Local staff support and English proficiency
 - ③ Understanding contracts, contract length and hidden clauses
 - ③ After school activities and requirements
 - ③ Payment terms and what happens in the event of non-payment; and taxes
 - ③ Disciplinary processes
- And many more considerations!

So you might find a job but you'll be unprepared from a teaching, cultural, financial and emotional perspective.

We **take the pressure and stress away** from you by guaranteeing your job placement and providing **peace of mind support**.

- ✓ We guarantee you a teaching job in carefully vetted and trusted schools where every effort is made to match placement preferences.
- ✓ You can focus on enjoying your new lifestyle knowing your income of **\$1600 – \$1900 USD** is secured.
- ✓ We'll explain all the paperwork, contracts, taxes, work hours, requirements and responsibilities.
- ✓ We walk you through everything you need to know before you depart to South Korea and from the moment you touch down, you'll continue to receive peace of mind 24/7 support from our in-country team who will be on hand for you throughout your placement.
- ✓ We've all taught abroad before and, having placed over 2200+ participants around the world, know the key to success is well-trained, culturally-adjusted, and emotionally-supported teachers.

[Click here to read more →](#)



Yeouido Park in Seoul, South Korea.

AWARDS & NOMINATIONS

We're thrilled to be recognized as one of the best Teach Abroad organizations and these awards reflect our commitment to delivering an exceptional standard of professional support, training and experiences to our community of teacher travelers worldwide.

[Click here to read more →](#)





LIFETIME PLACEMENT GUARANTEE

Once you've taught in one of the TravelBud schools, we can guarantee you a position at another partner school in any of our destinations for which you are eligible on your program line, at no additional charge to you.

- ✔ Pay one enrollment deposit and you're able to teach in any partner school in any destination as long as you like provided you qualify for the destination you would like to teach in.
- ✔ It offers a lifetime of opportunities to make a difference in the lives of your students and travel the world in a sustainable way.
- ✔ For example, once you're finished in one country you can travel over to another destination on your program line at no additional cost and experience a whole new cultural adventure.
- ✔ Alumni can also transfer between program lines at special alumni pricing. Speak to your enrollment coordinator for more information.



Marek, an English teacher from the USA, in front of his class. Our placements offer both public and private school options.



Grace with her kids in South Korea.



BOOST YOUR EMPLOYABILITY

Taking a year off might seem like a step back, but in reality, it's a wonderful opportunity for **growth** and **exploration!**

Although you may think it's a halt in your education journey, you're actually fast tracking yourself through:

- ③ Learning **independence**.
- ③ Learning how you **react to different situations**.
- ③ Learning how to master and **grow your confidence in public speaking**.
- ③ Learning how to **overcome obstacles**.
- ③ Learning about yourself through your own **personal self discovery**.
- ③ Learning how to step out of your comfort zone and **challenge yourself**.

These would normally take much longer in a normal, sheltered environment and wouldn't be nearly as much fun!

When you do head back home, you're not just another resume in a pile of resumes – you are someone different who's done something interesting and rewarding.

People who are able to reflect on their experiences will **give them an edge in their interview**, no matter what industry or profession.

[Click here to more →](#)



PROGRAM OPTIONS

WE OFFER 3 PROGRAM OPTIONS:

OPTION 1

IN-CLASS TEFL & PLACEMENT

If you **do not** have an internationally accredited TEFL/TESOL certification, we highly recommend our in-class course held in South Korea to prepare you for your teaching adventure abroad.

[Click here to see what's included](#)



OPTION 2

ONLINE TEFL & PLACEMENT

We also offer a range of internationally accredited online TEFL/TESOL courses which you can take prior to heading to your guaranteed placement in South Korea.

[Click here to see what's included](#)



OPTION 3

PLACEMENT ONLY

If you already hold an accredited 120 Hour TEFL/TESOL certification, then our Placement Only option guarantees you a teaching job with all our in-country support benefits.

[Click here to see what's included](#)



PROGRAM FEES COMPARISON

| | OPTION 1 In-Class TEFL & Placement | OPTION 2 Online TEFL & Placement | OPTION 3 Placement Only |
|--|--|--|-------------------------------|
| Secures your spot | ✓ | ✓ | ✓ |
| Comprehensive pre-departure support and guidance | ✓ | ✓ | ✓ |
| Personalized one-on-one support | ✓ | ✓ | ✓ |
| Visa Guidance | ✓ | ✓ | ✓ |
| Your questions answered | ✓ | ✓ | ✓ |
| Guaranteed job placement | ✓ | ✓ | ✓ |
| 24/7 In-country support | ✓ | ✓ | ✓ |
| Lifetime teaching placement guarantee | ✓ | ✓ | ✓ |
| TEFL Course | ✓ (4 weeks in-country) | ✓ (4 weeks online) | |
| Internationally Accredited Certification | ✓ | ✓ | |
| Practical Teacher Training in-class | ✓ | ✓ | |
| Airport pickup and transfer *Subject to correct arrival times | ✓ | ✓ | ✓ |
| SIM Card Included | | | |
| SIM Card guidance | ✓ | ✓ | ✓ |
| Local bank account guidance | ✓ | ✓ | ✓ |
| Shared Accommodation | ✓ (for 1st month in-country) | | |
| Cultural Orientation including excursions | ✓ (1 week) | ✓ (weekend) | ✓ (weekend) |
| Visa Run | ✓ (for 1st month in-country) | | |
| Lesson Plan templates and resource directories | ✓ | ✓ | ✓ |
| Support networks | ✓ | ✓ | ✓ |
| Self development and advantageous future employability | ✓ | ✓ | ✓ |
| Fees | VIEW FEES | VIEW FEES | VIEW FEES |



CULTURAL PREPARATION

Part of the success of your experience comes from **understanding the culture** that you're going to be living and working in.

Cultural awareness training helps you to settle into your new environment, make local friends, avoid misunderstandings, and enjoy success in social and professional life.

OUR PROGRAM INCLUDES:

- ✓ Pre departure support to guide and prepare you
- ✓ Logistics and safety when arriving
- ✓ A toolkit for navigating your new country
- ✓ A support network of fellow teachers
- ✓ 24 / 7 In-country support for peace of mind
- ✓ Having fun & embracing your new adventure



✈️ PRE-DEPARTURE SUPPORT

- ① We'll outline the entire process you'll follow to realize the teaching abroad dream.
- ② Receive detailed pre-departure guidance with ample opportunity to ask any questions, no matter how trivial they may seem!
- ③ We'll explain and help you get the necessary documentation prepared prior to departure.
- ④ We'll assist you with all planning, packing, visas, costs, budgeting and booking flights.
- ⑤ We'll alleviate trip worries and highlight the transformative joys of teaching abroad.

🛡️ LOGISTICS AND SAFETY WHEN ARRIVING

- ① We'll provide airport pickup to ensure a stress-free arrival.
- ② We'll introduce you to your 24/7 support team on the ground.
- ③ We'll take you to your pre-arranged accommodation. [Click here to read more →](#)
- ④ We'll aid in setting up your SIM card for connecting with loved ones and new friends during your orientation.
- ⑤ We'll help set up a local bank account to save on withdrawal fees and receive your salary.



A TOOLKIT FOR NAVIGATING YOUR NEW COUNTRY

A solid start to adapting and connecting in your new country with fellow teachers and staff.

IN-CLASS TEFL/TESOL PARTICIPANTS EXPERIENCE:

Our 1-week Korean cultural orientation lays the groundwork for your South Korea experience, fostering bonds with fellow trainees and staff.

LEARN FOUNDATIONAL KOREAN LANGUAGE

We help you with foundational language to help you navigate:

- The bustling markets.
- Grabbing a taxi.
- Ordering a delicious meal.
- Garnering respect from locals.



CULTURAL AND HISTORY LESSONS

Learn from local Korean staff and ex-foreign teachers who've embraced Korea. Understand cultural dynamics to feel at ease, avoid mistakes, address locals and colleagues, and navigate Korean classroom norms.

CULTURAL EXCURSIONS

KOREAN WAR MEMORIAL

Participants will head out to Seoul to visit the Korean War Museum and Memorial. This excursion is a detailed look into the “Forgotten War” and participants will be given a guided tour by an expert in the field. They will be able to walk around and see different displays as well as original vehicles, planes, boats etc. that were used during this conflict. The Korean war is a major part of the peninsula’s history and is a great learning opportunity for all.



Participants on the Hanbok Palace Tour.



GRAND PALACE TOUR

This is the highlight of our orientation week. Participants are taken to a Hanbok (traditional Korean Dress) café to get dressed in the traditional clothing. They are then taken back in time to visit the Gyeongbokgung Palace which was built during the Joseon Dynasty (1395) and given a guided tour of this grand palace. This is a great photo opportunity for all and is a wonderful experience.

KOREAN COOKING CLASS WITH CHEF HERO

Korean food is fast gaining in popularity around the world, and for good reason. Participants can see how the food is made and learn about the ingredients used in making certain dishes. They will then be shown how to cook some of Korea’s most famous dishes, cook these dishes themselves, and then devour a feast prepared by themselves and the charismatic chef Hero. Some dishes that they will learn to prepare are Bulgoggi, Gimbab and Kimchi Pancakes.



Participants during the Korean cooking class. You'll prepare learn to prepare Bulgoggi, Gimbab and Kimchi Pancakes.



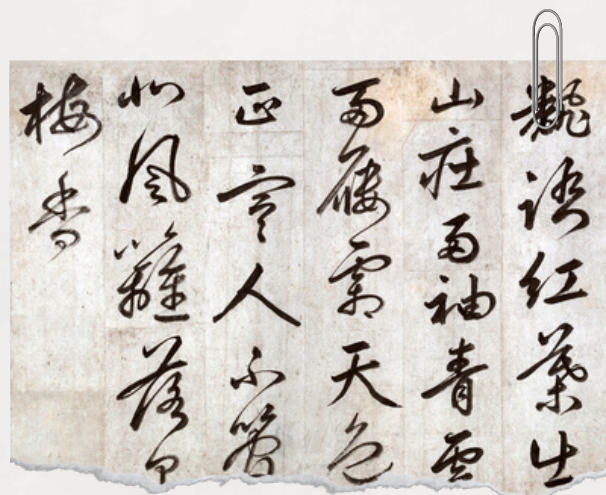
Participants take part in a Taekwondo class.

TAEKWONDO MARTIAL ARTS CLASS

Taekwondo is a Korean martial art, characterized by its emphasis on head-height kicks, jumping and spinning kicks, and fast kicking techniques. We will be visiting a 'Dojang' where the Taekwondo master speaks excellent English and will cover things like correct form, self-defense and participants even get to test their strength by breaking a wooden board!

KOREAN LANGUAGE CLASS

6 hours of Korean language lessons taught by a qualified Korean Language teacher. These are broken down into 3 x 2-hour lessons and covers the basics of the Korean alphabet up to basic conversational content to help the participants better grasp the concepts of the Korean Language. * Exact scheduling is subject to change



TravelBud Teachers in South Korea on a cultural orientation tour at the Gyeongbokgung Palace.

K-POP DANCE CLASS

This latest addition to our awesome and action-packed orientation week gives the teachers the opportunity to blow off some steam and learn some awesome new dance moves to their favourite K-POP songs. Lead by an expert dance teacher, this is sure to be a winner for everyone!



ONLINE TEFL/TESOL & PLACEMENT ONLY PARTICIPANTS ENJOY:

Cultural Weekends: Join fellow teachers for a Korean cultural program through selected weekends, including group activities and excursions in Seoul.

Excursions: Possible activities encompass a welcome dinner, Gyeongbok Palace Tour, guided cultural walks, traditional hanbok wearing, tea tasting, and more.

Flexible Sundays: Explore the city and connect with friends at your own pace.

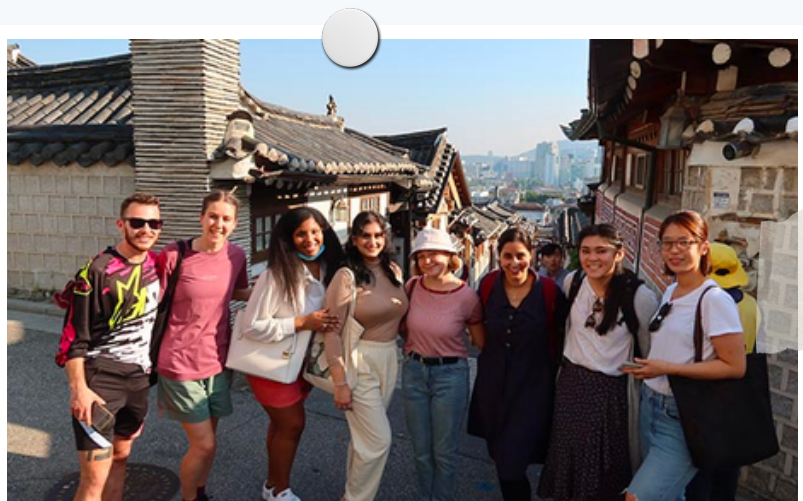
Tailored Assistance: We can help recommend and plan your preferred activities.

EXCURSIONS

May include, but are not limited to, the following:

- **Welcome dinner**
- **Gyeongbok Palace Tour**, commonly known as the Grand Palace, the largest of 5 grand palaces in South Korea
- **Guided tours** by a professional Korean tour guide
- **Insadong and Bukchon Hanok** cultural area **walking tour**
Wearing a traditional hanbok (Korean traditional clothes)
- **Traditional Tea Tasting in Insadong**
- **Bukchon Village** or **King Sejong Museum**

Exact times and activities are subject to change and will be released closer to the orientation date.



Online TEFL/TESOL and Placement Only participants take part in the Insadong and Bukchon Hanok cultural walking tour.

A SUPPORT NETWORK OF FELLOW TEACHER TRAVELERS

In addition to the personal assistance and 24/7 support we provide, you'll also have a support network of fellow teachers.

MEET FELLOW TEACHER TRAVELERS

Meet other like-minded individuals who are experiencing the same pleasures and challenges you are.

Only they understand what you're also going through in a way that friends at home would never.

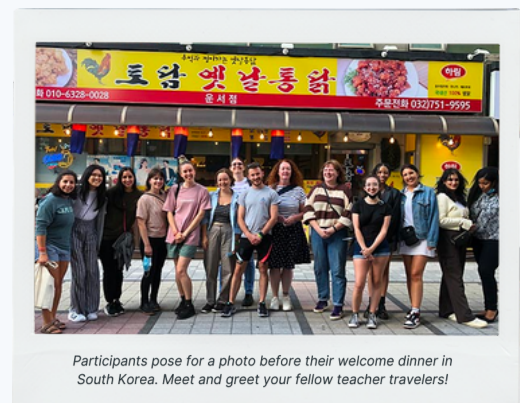
MAKE LIFELONG MEMORIES

Many of our teachers visit the friends they make during the cultural orientation and TEFL Course.


This becomes a valuable network and community for you as you're able to visit your friends in different parts of Korea and fully experience all that the country has to offer.

DIVERSE RANGE OF BACKGROUND


We have teachers participating in the cultural orientation and TEFL course from all over the world.




24/7 IN-COUNTRY SUPPORT

 Rest assured, we're here to address any questions—translation, culture shock, legalities, emergencies, travel, or school matters. Assistance is readily available.

 Teacher meet-ups.

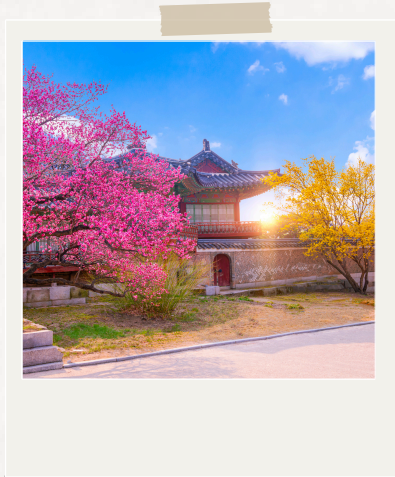
 Ex-foreign teachers and local staff offer ongoing personal support during your teaching experience.

 We check in with you regularly and keep up to date with your teach abroad experience.

Have some fun and embrace your new adventure!



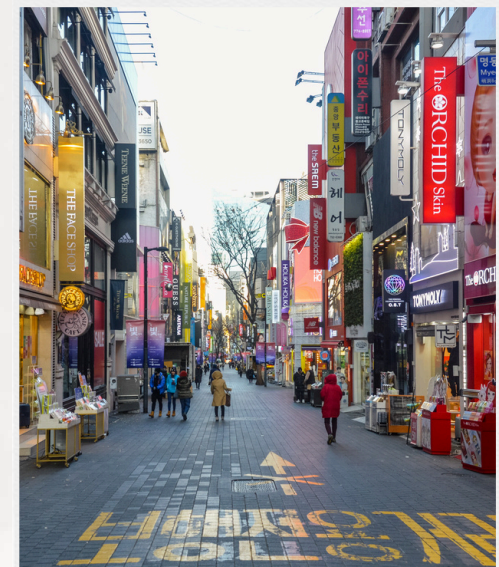
Visit the beautiful Changdeokgung Palace.



Explore the beautiful streets of Hanok village.



Experience Traditional South Korean food – the land of the side dish!



Walk the streets of Insadong, crammed with teahouses and Korean eateries, plus shops selling traditional goods like pottery, tea and handmade hanji paper.



INTERNATIONALLY ACCREDITED TEFL/TESOL CERTIFICATION

A quality TEFL/TESOL course helps teachers avoid the frustration and pitfalls of being unprepared in the classroom and provides all the necessary knowledge and tools to effectively teach English.

COURSE LOCATION

Our headquarters is on Yeongjong Island, Incheon, with offices, meeting rooms and a large classroom for TEFL/TESOL training.

It is footsteps to accommodations, tons of food shops, loads of great outdoor activities and numerous green spaces. It is also located right on the airport express subway line and is just 40 minutes away from downtown Seoul.

COURSE COMPONENTS

- Insight into Korean culture, history, and society for navigating the new environment.
- Robust Korean language instruction.
- Theory and history of teaching English, emphasizing classroom application.
- Hands-on training in teaching language skills, with lesson planning and peer feedback.
- Practical tips for teaching various age groups.
- Real-world teacher practicum at local charity schools or language centers.
- Classroom management guidance.

CONCISE COURSE OVERVIEW

Week 1: Explore Korean culture, language, and bonding with peers and staff through interactive sessions and cultural excursions.

Week 2: Dive deeper into English as a second language theory, grammar teaching, and crafting effective lesson plans considering challenges and technology. Develop speaking and grammar teaching skills, with practical assignments.

Week 3: Focus on teaching reading, listening, and planning for young learners. Learn about curriculum development for sustainable student progress.

Week 4: Learn crucial classroom management in cross-cultural contexts. Prepare and conduct a two-day English camp. Final week includes an in-class exam.

[Click here for a detailed course overview →](#)

INTERNATIONAL ACCREDITATION

Our internationally accredited in-class and online TEFL/TESOL courses are accepted by employers around the world and is accredited by Accreditat. Accreditat is registered under the UKRLP (UK Register of Learning Providers), Number 10065351. Registration on the UKRLP means they have been verified against a recognized legal source.

Graduates of our internationally accredited 120-hour TEFL/TESOL course have used their TEFL/TESOL certificate to successfully find employment in ESL teaching and education fields in nearly every Western, native-English speaking country, as well as across Europe, Asia, South America, and beyond.

ONLINE TEFL/TESOL COURSES

An alternative to our in-country TEFL course certification is an accredited online TEFL/TESOL course certification.

[Click here to read more →](#)





ACCOMMODATION

ACCOMMODATION DURING THE TEFL/TESOL COURSE

Your TEFL/TESOL course accommodation is pre-arranged in South Korea.

Airport transfer is included for in-class applicants, usually on Sundays between 6AM and 6PM, with flexibility for earlier arrivals.

For early morning arrivals, a pickup around 9AM might be arranged.

Airport transfers aren't included in placement-only programs.

Some schools might offer airport transfers, otherwise, we guide you from the airport to your accommodation.

FREQUENTLY ASKED QUESTIONS

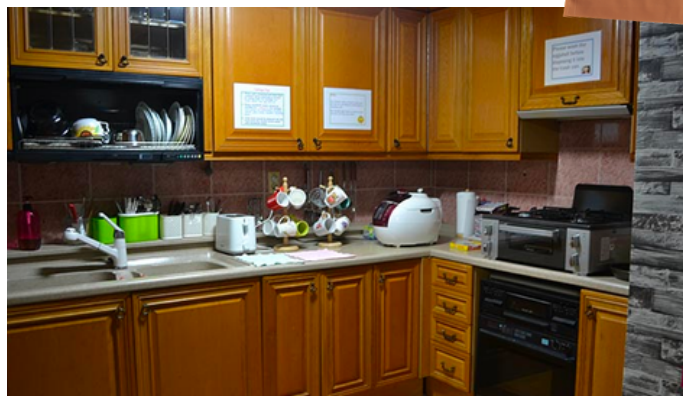
HOW MUCH WILL RENT COST?

Rent will vary depending on where you are living, but is subsidized by your school so it is affordable.

WILL I BE LIVING WITH SOMEONE?

If you are placed with a friend or partner, you will hopefully be able to live together. Otherwise, your school will organize a bachelor flat for you.

We're here to **guide you** through the whole process.



Incheon accommodation. Clean and tidy with everything you'll need for your TESOL course.



TEACHING PLACEMENTS

There are two main types of schools in Korea: Public Schools and Private Language Centers also known as “Hagwons”. Our placements are predominantly in Private Language Centers.

PRIVATE LANGUAGE CENTRES – “HAGWONS”

- These serve as supplements or alternatives to public school education for English learners.
- Teaching hours range from 09:00 to 22:00, varying by age group. *Kindergarten and elementary teachers usually work 09:00 to 18:00, while elementary and middle school teachers typically work from 13:00 to 22:00.*
- Feature advanced facilities, ample resources, and strong support for educators, often operated by large companies with multiple branches across South Korea.

[Click here to read more →](#)



South Korea

TEACHER PLACEMENT INFORMATION

TOP LOCATIONS



BENEFITS

- **\$1600 – \$1900 USD** per month
- Free Furnished Housing
- (Studio or one bedroom apartment)
- Health insurance coverage
- Airfare reimbursements
- 13th paycheck bonus

PLACES TO VISIT

- 1 Gyeonggi-do Province and Seoul
- 2 Gyeongsangnam-do Province
- 3 Chungcheongnam-do Province
- 4 Jeollanam-do Province
- 5 Gangwon-do Province

Flight to Japan: 2-3 hours

Flight to Thailand: 5-6 hours



INTAKE DATES

- ① One of the huge advantages of taking the TEFL/TESOL course in South Korea is that the course itself **prepares people thoroughly** for teaching in Korean schools and language centers and **gives you first-hand experience** in the classroom during the practical portion of the course.
- ② Placement-only candidates will be invited to join one of the cultural weekends designed specifically for placement only teachers.
- ③ Online TEFL/TESOL courses start on the first Monday of each month.

| INTAKE DATE | CAN I STILL APPLY? |
|-------------|---|
| 2025 | Click here to view intake dates → |
| 2026 | Click here to view intake dates → |





BUDGETS

Click below for more info.

Budget before you arrive



Budget for 1 month TEFL/TESOL course in South Korea



Budget for first month of teaching



Budget Totals



We realise that moving abroad to teach English in South Korea is expensive at first, but with TravelBud **your teaching job is guaranteed.**

- ✓ You can focus on enjoying your new lifestyle knowing your monthly income of **\$1600 – \$1900 USD secured.**
- ✓ Once you start earning a salary, your living costs will be comfortably covered and you'll start to learn how to cut down on your monthly expenses (for example, eating out less and finding the most affordable grocery store in your placement town).
- ✓ You will be able to enjoy your time teaching and travelling in Korea and **save a good portion** of your salary (**\$800 – \$1000 USD per month**) to fund your bucket-list travel adventures, pay off student loans, and return home with some savings to your name.

| FEES | OPTION 1 In-Class TEFL & Placement | OPTION 2 Online TEFL & Placement | OPTION 3 Placement Only |
|---|--|--|----------------------------------|
| Enrollment Deposit | \$599 | \$599 | \$599 |
| Comprehensive pre-departure support and guidance | ✓ | ✓ | ✓ |
| Personalized one-on-one support | ✓ | ✓ | ✓ |
| Visa Guidance | ✓ | ✓ | ✓ |
| Your questions answered | ✓ | ✓ | ✓ |
| Online TEFL Fee | | Choose between 120-Hour Online TEFL \$499 170-Hour Online TEFL \$1,299 | |
| Final Program Fee, Guaranteed Job Placement & 24/7 Support | \$2,500 \$2300 | \$1,300 | \$1,300 |
| Guaranteed job placement | ✓ | ✓ | ✓ |
| 24/7 In-country support | ✓ | ✓ | ✓ |
| Lifetime teaching placement guarantee | ✓ | ✓ | ✓ |
| TEFL Course | ✓ (4 weeks in-country) | ✓ (4 weeks online for 120h or 11 weeks online for 170h) | |
| Internationally Accredited Certification | ✓ | ✓ | |
| Practical Teacher Training in-class | ✓ | | |
| Airport pickup and transfer *Subject to correct arrival times | ✓ | ✓ | ✓ |
| SIM Card Included | | | |
| SIM Card guidance | ✓ | ✓ | ✓ |
| Local bank account guidance | ✓ | ✓ | ✓ |
| Shared Accommodation | ✓ (for 1st month in-country) | | |
| Cultural Orientation including excursions | ✓ (1 week) | ✓ (weekend) | ✓ (weekend) |
| Visa Run | ✓ | | |
| Lesson Plan templates and resource directories | ✓ | ✓ | ✓ |
| Support networks | ✓ | ✓ | ✓ |
| Self development and advantageous future employability | ✓ | ✓ | ✓ |
| TOTAL FEES IN US DOLLAR (USD) | 120-Hour In-Class TEFL \$2,899 | 120-Hour Online TEFL \$2,398 170-Hour Online TEFL \$3,198 | Placement Only \$1,899 |



MEET THE TEAM

We're a crazy bunch of hard working and committed travelers helping you get the best out of your experience abroad. We're all collectively invested in the growth and sustainability of TravelBud and value respect, support and understanding within our team.

[Click here to read more →](#)



Saskia Smuts
CEO



KIM LE ROUX
Support Manager



BEN NIEMAN
Support Coordinator



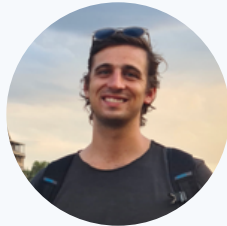
CHELSEA MOSES
Support Coordinator



CHARLOTTE GOODWIN
Support Coordinator



GRACE MARTENS
Enrollments Director



JAMES TAYLOR
Enrollments Coordinator



ALYSSA LEEPER
Enrollments Coordinator



DESTINY KIM
Enrollments Coordinator



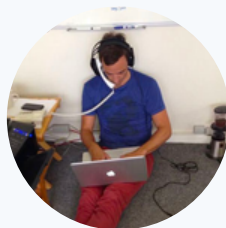
SINALO MBEWU
Intern



LIAM KELLY
Founder



STU BROWN
Co-Founder



TRISTAN OWEN
Technical Director



LUKE KELLY
Director

Having all embarked on our own journeys teaching abroad, we passionately believe in the life-changing power of the teach abroad experience.




PACK YOUR BAGS, ADVENTURE AWAITS!


Join TravelBud on a Global Teaching Adventure


APPLY NOW

Read more [company information](#) on our website, including our awards, social media profiles, accreditation and verification.

CONTACT

 +1 347 344 5419

 +44 20 3854 3033

 +27 21 300 1843

